



User's Manual

<http://www.1thewater.com>



Made in Korea




Before using

Please read this user manual for correct installation, and maintenance of the product. If a problem occurs while using the product, please refer to this user manual to solve the problem. After reading, keep this user manual with the warranty in a place that is easy to reach.

Table of Contents

Notice for the correct and safe use	2
Name of each part [working drawing]	3
Product specifications	4
Preparation before installation	5
How to install the product	6
How to replace the filter	11
Checklist before requesting Service	12
Support App	13
Note	14

01. Notice for the correct and safe use

 Danger	 Warning	 Caution
If the instructions are not followed, death or severe injury may occur.	If the instructions are not followed, considerable physical injury or property damage may occur.	If the instructions are not followed, light physical injury or property damage if not kept the instructions.

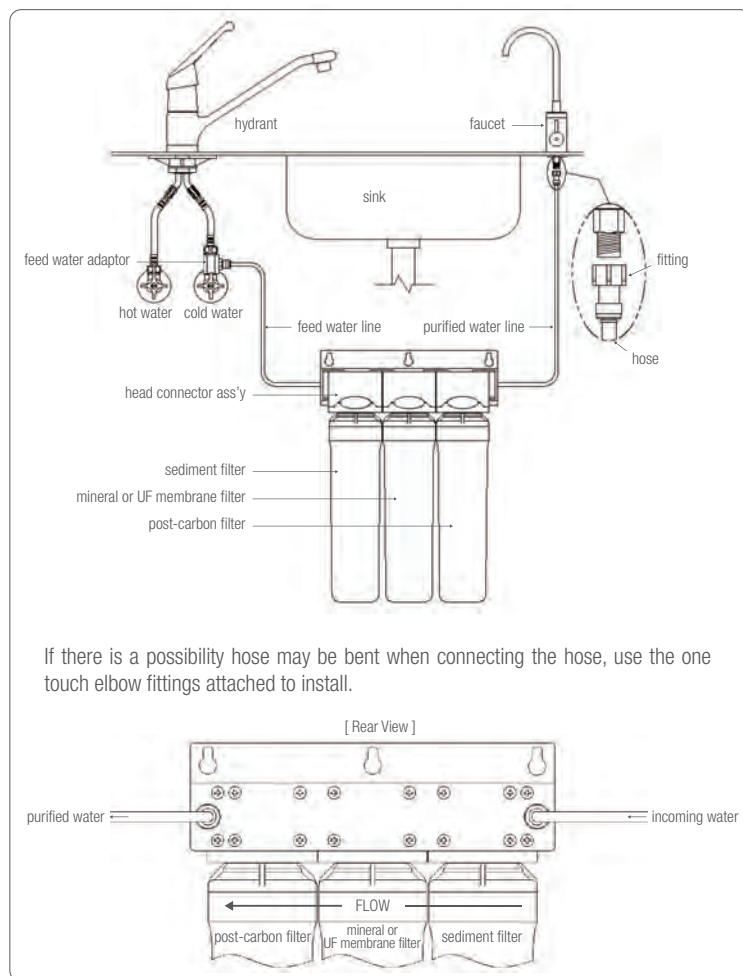
Warning

- Never disassemble, repair or reconstruct.
: This may cause failure.
- Never press the push button or twist filters while using the product.
: This may cause failure due to high water pressure.
- Do not install near radiators.
: This may cause fire, or the product could be damaged, resulting in the leakage.

Caution

- Do not install on uneven surfaces and not apply too much force to the item.
: This may cause physical injury or breaking of the product.
- Lock the feed water supply valve if it has not been used for a long time.
: Especially, during holiday season, the water pressure will rise and it may cause leakage.
- Avoiding common water pollutant, replace the water filter according to our recommended water filter replacement period.
: If an exhausted filter is used, the function of purification could be lowered.
- When replacing the filter or moving the product, do not pull the water supply hose.
: The water supply hose may be removed or the coupling may be weakened.
- If leakage occurs while using the product, or the area around the product is wet, lock the raw water supply valve immediately.

02. Name of each part (Working Drawing)

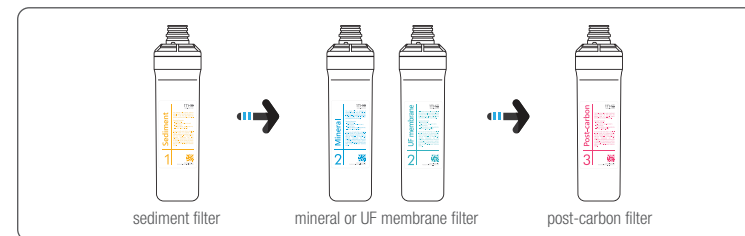


[Fig. 1] Product working drawing

03. Product specifications

Filter size : 8", 10", 11", 13"

Purification process



Use Condition

- Feed water pressure: 0.5~4kgf/cm²
- Feed water temperature: 4~45℃
- pH : 2.0~11.0
- Max. Flow: 4 LPM

Caution

If the pressure of raw water exceeds 4kgf/cm² (100 psig), it is recommended to use a pressure regulator (pressure reducing valve).

Filter function and replacement period

Classification	Sediment	Mineral	UF Membrane	Post-carbon
Function	Removes the invisible fine particles or rust remnants	Elutes minerals and it increases pH level and provide alkali water.	Removes the fine floating materials more than 0.01μm and microorganism	Removes the odor and improves the taste of the water
Estimated replacement period	6~8 Months	6~8 Months	12~18 Months	12 Months

Change the filter periodically. If the replacement period is exceeded, the quality of the purifier may be lowered.

The replacement period can be changed within the estimated replacement period according to the quality condition of raw water. (Filter replacement periods are applied based on 10 ℓ daily use at home)

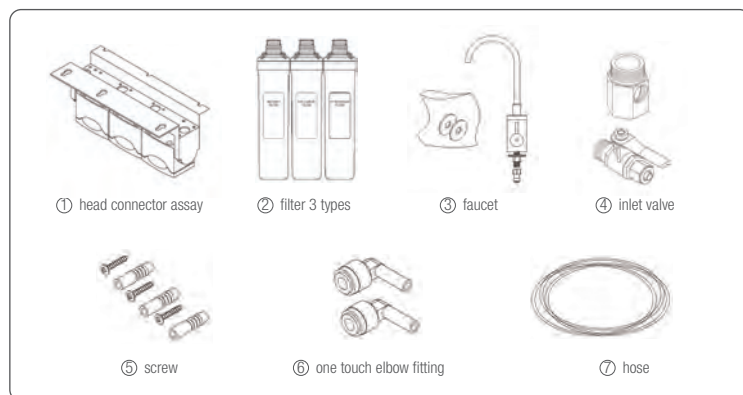
04. Preparation before installation

Caution

- Read User Manual before installing the product.
- This product is a home purification system using tap water as raw water.
- The feed water exceeding the use requirements of this product needs pretreatment.
- Do not use water which is not safe biologically or has not been sterilized properly.
- The adaptor of raw water is PF1/2" screw. Check the screw specifications of the raw water line.
- For water service systems that are different from Figure 1, contact A/S center to ask help for installation.

1THE Water Filter System

Make sure that all the components are provided.



[Fig. 2] Components

Installation Location Checking

PnP Filter System installation

It can be installed at a convenient place under a sink. However, this product should be installed within 4ms from feed water supply valve and faucet.

Faucet installation

Install at a convenient place on the upper part of a sink. However, there shouldn't be any obstacle in the space under a sink where the faucet is installed.

05. How to install the product

Caution

- Keep to the minimum distance so that the hose connected between components is not bent or twisted.
- Do not install in any place that is lit by direct sunlight or exposed in the frozen status.
- Be sure to install in a convenient place for filter exchange or maintenance.
- When moving or lifting the product, Make sure the filter remains in the vertical position.

How to connect the hose between components

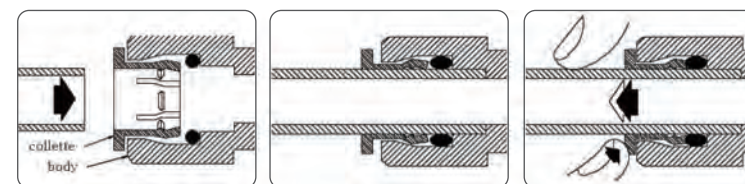
The connection of the hot/cold water supply line, head connector assay, and the purified water faucet can be completed simply by using one touch fitting.

How to use one touch fitting

Fitting is the structure where the part called 'collette' is inserted in the body as shown in the figure below. The inside of the collette is shaped like a fishing hook that helps the hose to stay inside to be removed if inserted.

1. Push the hose in the part assembled with collette deeply and connect (Fig. 3-1, 3-2).
2. When removing the hose, pull the hose by pressing the collette as shown in Fig. 3-3.

[Fig. 3] How to use one touch fitting



[Fig. 3-1]
Insert the hose into the collette.

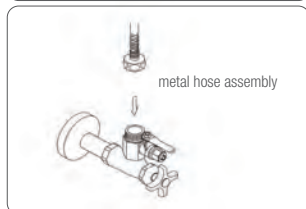
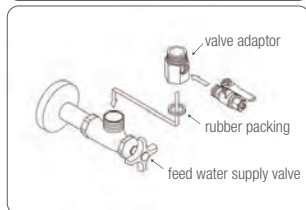
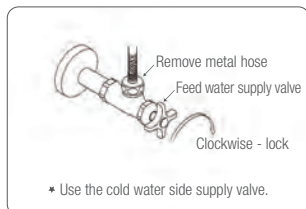
[Fig. 3-2]
Push the hose into the bottom of the fitting.

[Fig. 3-3]
When removing the hose, complete the task by pressing the collette.

How to install the inlet valve

Caution

- First, check the screw standard of raw water supply line under a sink. The screw of this valve is PF1/2" standard screw. (If the standard is wrong, never construct it.)
- Be sure to install the valve in the cold water side of the raw water line. If installed in the hot water side of raw water line, the purification system shall be damaged or the function can be disabled or broken.



[Fig. 4] Installation of the feed water adaptor

1. Close the feed water supply valve in the cold water side feed water line.
2. Remove the metal hose that is connected with the sink hydrant.

3. Assemble the feed water adaptor and valve as shown in the figure. (Be sure to insert the rubber packing)

4. Assemble the metal hose again on the assembled raw water adaptor.

Caution

- Do not open the feed water supply valve yet.

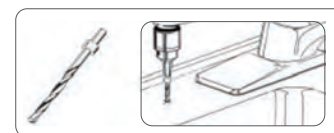
Installation of purified water faucet

Notices regarding selecting the location

Caution

- If there are obstacles in the open area under a sink, it is not possible to install a faucet. Be sure to check the lower part of the sink in order to install a faucet.

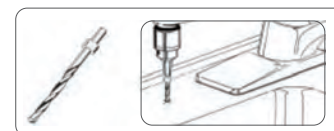
How to install the inlet valve



[Fig. 5-1] Positioning hole drilling

Caution

- Use a strong speed drill for this work.
- Avoid a fast RPM during first drill operation. There may be dangerous as chips or pieces can be scattered.



[Fig. 5-2] Big hole drilling

1. Drill the positioning hole (diameter 3~5mm) using a drill.

2. Install the drill on a drill chuck firmly and drill a large hole (diameter 11~12mm).

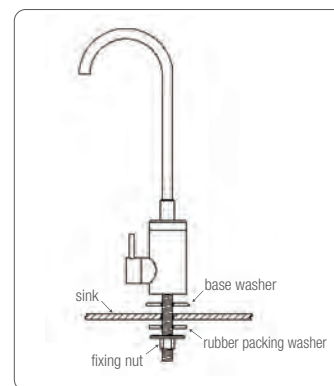
Operate slowly by pressing the drill motor on the positioning hole lightly. Increase the motor RPM gradually.

3. Clean the chips around the hole. You are now ready to install a faucet.

4. Insert the base washer into the screw area under the faucet body and then insert the faucet in the drilled hole.

5. Insert the rubber packing washer under a sink and then fix the faucet firmly using fixing nuts firmly.

6. Connect one touch fitting to the end of the screw area of the faucet and connect the hose.



[Fig. 5-3] Faucet installation

Installation of the head connector assay

Install in the convenient area under a sink to be apart more than 1ft) from the floor.

If installed lower, it will not be possible to install the filter. (Refer to Fig. 5-4.)

Filter installation

Caution

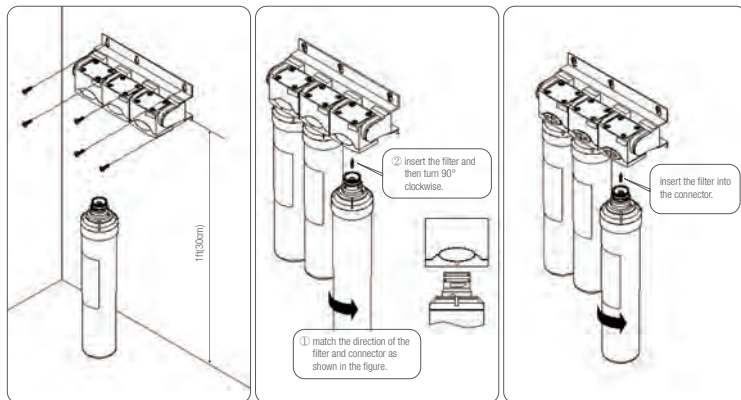
- Install the filter according to the procedure marked in the connector of the head connector assay. If the procedure is changed, it may cause a serious problem with the purification performance.

Twist Type

- Arrange the filter as shown in Fig.5-5. and insert the filter. Push it up and insert by turing 90° clockwise.

Push Type

- Arrange the filter in the hole of the lower part of the connector and then push it up and insert by turning the filter.
(For Push type, if 'Click' sounds, it means that it has been installed normally.)
- Check to make sure that the push button is coming out normally.
(If it is not coming out, it means that the filter is not completely installed.)



[Fig. 5-4]
Attachment of the head
connector assay

[Fig. 5-5]
Installation of the Twist type
filter

[Fig. 5-6]
Installation of the Push type
filter

Hose Connection between each part

- Connect the raw water adaptor assembled in the cold water side and the inlet hole of head connector assay. In this case, make sure that the hose is not bent or twisted.
- Connect the hose between the outlet hole of head connector assay and one touch fitting connected to a faucet.

Caution

- Refer to Fig. 1. Working Drawing of page 3.

System Operation and Leakage Check

Caution

- Before operating the system, be sure to check if the pipe is connected correctly and verify the installation once again. Check if the components are connected with each other firmly.

Before operating the system, check the following.

The faucet should be unlocked. (Turn the faucet handle to CCW)

Open the raw water supply valve slowly.

After a while, check if the purified water is coming out from the faucet. Check the leakage of each part.

If the purified water is coming out normally, close the faucet.

Check the leakage of each part.

If there is no leakage, open the faucet once again.

Let the purified water run for about 5 minutes and then lock the faucet.

If the water tastes abnormal or smells bad, repeat the above 4 steps.

06. How to replace the filter

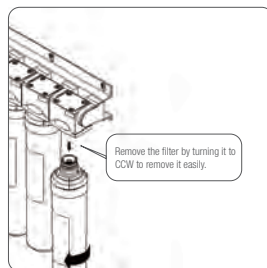
Filter replacement (4 types are all same.)

How to remove the filter

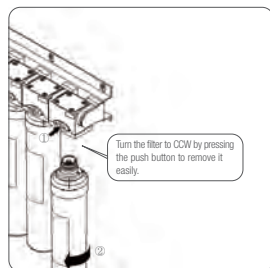
1. Lock the raw water supply valve.
2. Unlock the faucet to discharge the pressure inside the system.

Caution

- If the pressure inside the system is not discharged, water could be splashed with a "POP!" sound when removing the filter.
3. To replace the filter easily, hold the filter and pull it 45° forward.
 4. For the Turn type filter, remove the filter by turning it to CCW. For the Push type filter, remove the filter by turning it in the status of pressing the push button. (Pull the filter by turning to remove easily.)



[Fig. 6-1] Turn type filter removal



[Fig. 6-1] Push type filter removal

How to install the filter

5. Remove the packing of the new filter and match the upper part of the filter with the hole of the lower part of the connector and then insert it by turning. (Refer to Fig.7-1 and 7-2 of page 9.)
6. When the replacement process has been completed, unlock the feed water supply valve.
7. Check if there is a leakage in the filter and the head connector assay assembly part.
8. The purified water should be running out continuously. Wait for at least 5 minutes and then lock the faucet.

Filter replacement (4 types are all same.)

Caution

- To get the clean purified water, be sure to stick to the filter replacement period.
 - Sediment filter: 6~8 months
 - Mineral filter: 6~8 months
 - UF Membrane filter: 12~18 months
 - Post carbon filter: 12 months

07. Checklist before requesting service

Failure Index and Solutions

Phenomena	Causes/Checklist	Actions
The purified water does not run.	Is the feed water supply valve locked?	Unlock the feed water supply valve.
There is not enough purified water.	Is the hose bent or twisted?	Be sure not to bend the hose. Replace the bent hose.
	Is the raw water supply valve unlocked just partly?	Unlock the raw water supply valve fully.
	Did the temperature of the raw water decreases sharply? (This is especially applicable during the winter)	If the water temperature decreases, the amount of purified water shall be reduced.
	Has the life of the filter (replacement period) run out?	Replace the filter.
There is not enough purified water.	Has the life of post carbon filter run out? (Check the replacement period)	Replace the post carbon filter.
There is not enough purified water.	The hose is not connected completely.	Push the hose fully to connect it completely.
	The edge of the hose is damaged.	Cut the damaged area and connect again or replace with a new hose.
There is not enough purified water.	Fault in the hinge O ring assembled between the connectors.	Lock the raw water supply valve and contact the A/S center.

08. Support App

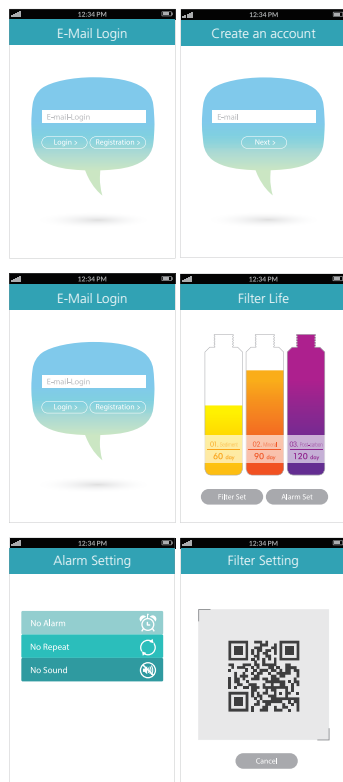
How to use app

- The most convenient way to maintain your water filter.
- Simply scan QR code with your smart phone.

* Free water filter replacement alarm application for both Apple and Android.



[Fig.8- 1] HOW to use ITHE Alarm



1. After installation, tap "Registration" to launch the program.
2. Input your Email address.
3. Choose your country.
4. Select what kinds of filter set you have.

5. Input Email address same as Step 2 and tap "Login".(Auto login is available when you use app next time)
6. Image shows the remaining life of filter.

7. Tap "Alarm Set" when you set alarm duration.
8. Tap "Filter set" and reset alarm duration after replacing filter.

09. Note